



INSTRUCTIONS

JEEP JL M.A.S.S. STORAGE PLATFORM

First off, thank you for purchasing your M.A.S.S. Platform from AAL! We greatly appreciate your trust in our company. We take that purchase and your commitment to us very seriously. If you have any questions along the way, please don't hesitate to give us a call at 385.202.4188.

****NOTE: Installation for the 4xE MASS Plus Installation is Identical with slightly shorter panels and access doors. Follow instructions all the way through****

We would also really appreciate you sharing photos on social media of the finished installation. If you are able to do so, please tag us in the photos so we can share them out as well.

- Instagram - @AmericanAdventureLab
- Facebook - AmericanAdventureLab
- YouTube - AmericanAdventureLab

Tools Required:

There is more than one tool for every job, but below is the list of tools we use for this installation.

- 18mm socket
- T40 Torx Socket
- 5mm Hex Socket
- 8mm Hex Socket
- Small Screwdriver
- Large Screwdriver or Pry Bar
- Medium Strength Threadlocker (ex. Blue Loctite)

Hardware:

- 6 M8 Washers
- 6 M8x50 button head bolts
- 18 M6x14 countersink bolts

Step 1 - Remove Seat Crack Cover

If your vehicle is equipped with the crack cover, you will need to remove it. This is included on most JL's that came factory-equipped with leather seats. The crack cover is at the bottom rear of the back seats. Using a pry bar or large screwdriver, pry up on the crack cover from below. There are several retaining springs that will pop free allowing you to remove the crack cover. You can set the crack cover aside as it will not be needed for the cargo platform.

Step 2 - Remove OEM Tie Down Hooks

For each tie down hook, use a small screwdriver to pop the plastic cover up and reveal the torx bit below. Remove the torx bolt with the T40 torx socket. Discard the bolts and hooks. They will not be used. The hooks are identified with the white arrows below.



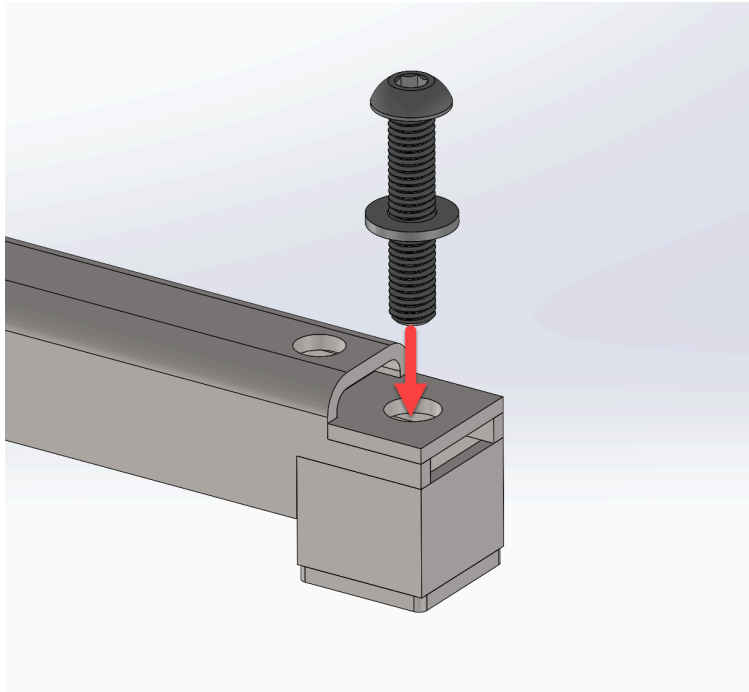
Step 3 - Remove the Carpeted Cubby Lid

This is the removable hinged lid that covers the hole below the cargo area. The lid will not be used. If you are combining this with our Dual ARB Compressor Bracket, this will already have been discarded.

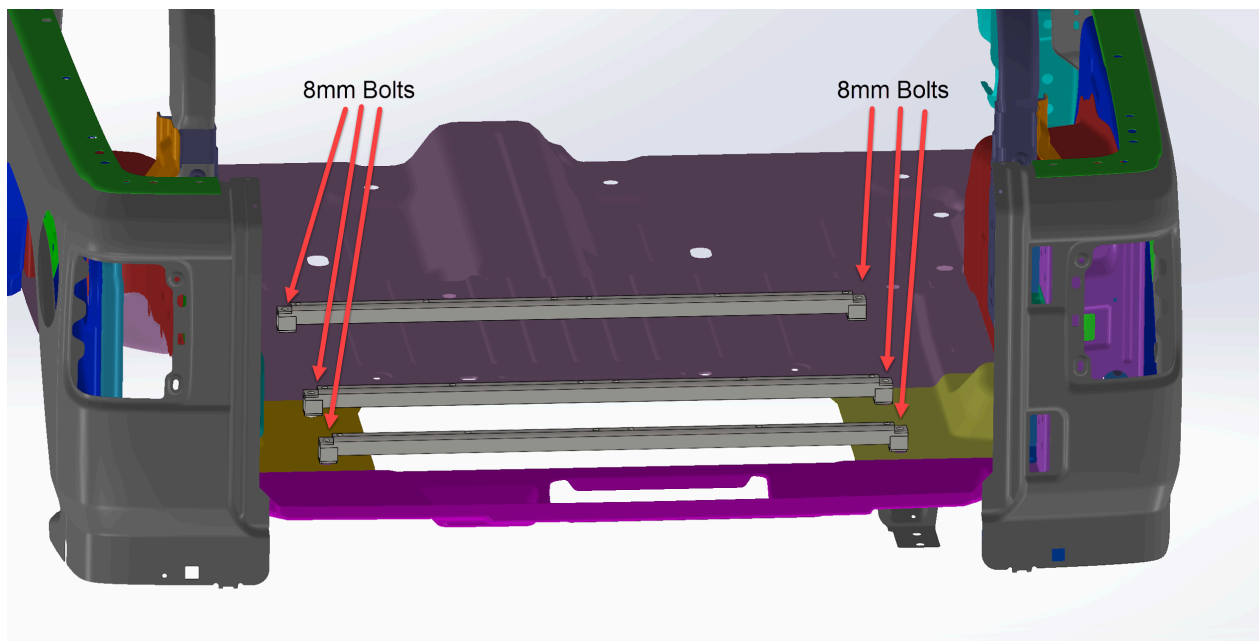


Step 4 - Position the Rails

The support rails run from left to right (as pictured below). Looking down from the top of each rail line each outermost hole up with the factory hole beneath (that previously held the tie down hooks). Then, loosely install the long 8mm bolts and washers through the outer holes and into the threaded bungs of the Jeep where the hooks previously lived. Keep these bolts slightly loose so the rails can move freely. We suggest using a medium-strength thread locker (ex. Loctite) on these bolts.

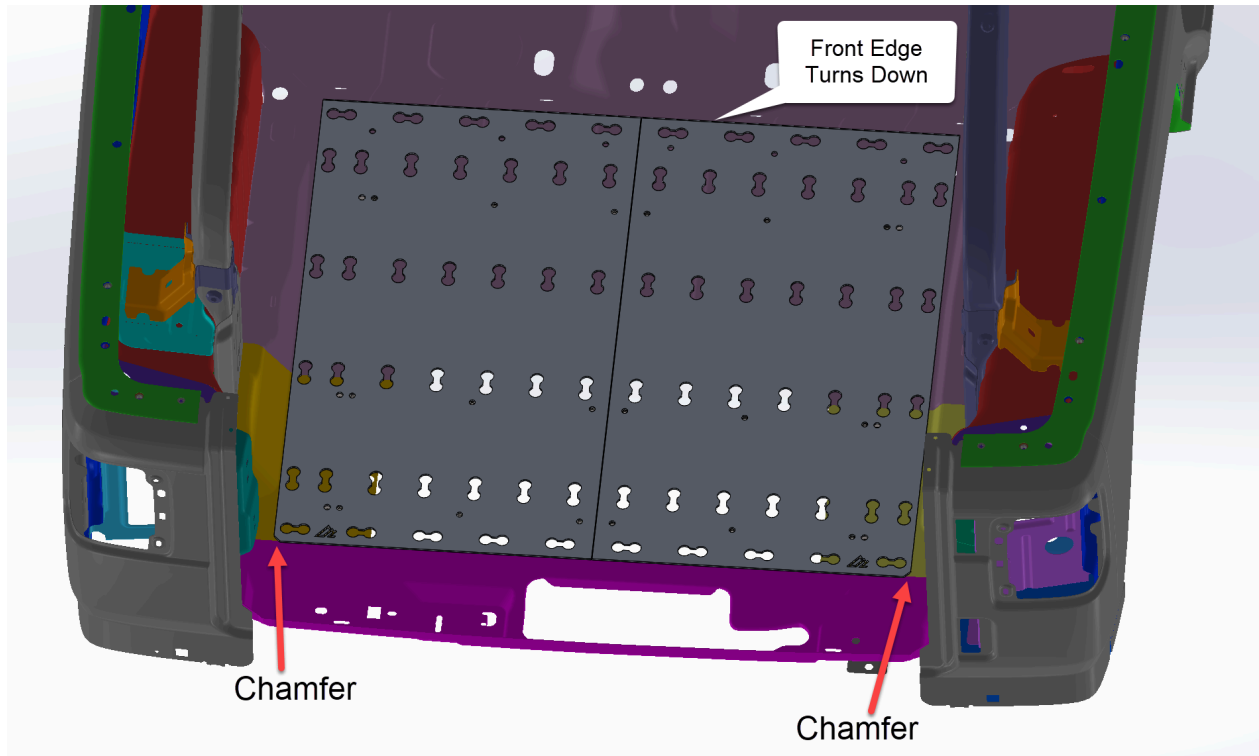


Position of the Bolts:



Step 5 - Position the Large Platform Plates

The platforms halves are different. There is a right and left side platform. The left side plate is chamfered on the left rear corner. The right side plate is chamfered on the right rear corner. The bent flange goes to the front of the vehicle and bends down. Place each platform onto the rails, aligning with the holes in the support rails below. The support rails can be moved slightly to align the holes.



Step 6 - Install Countersunk Bolts

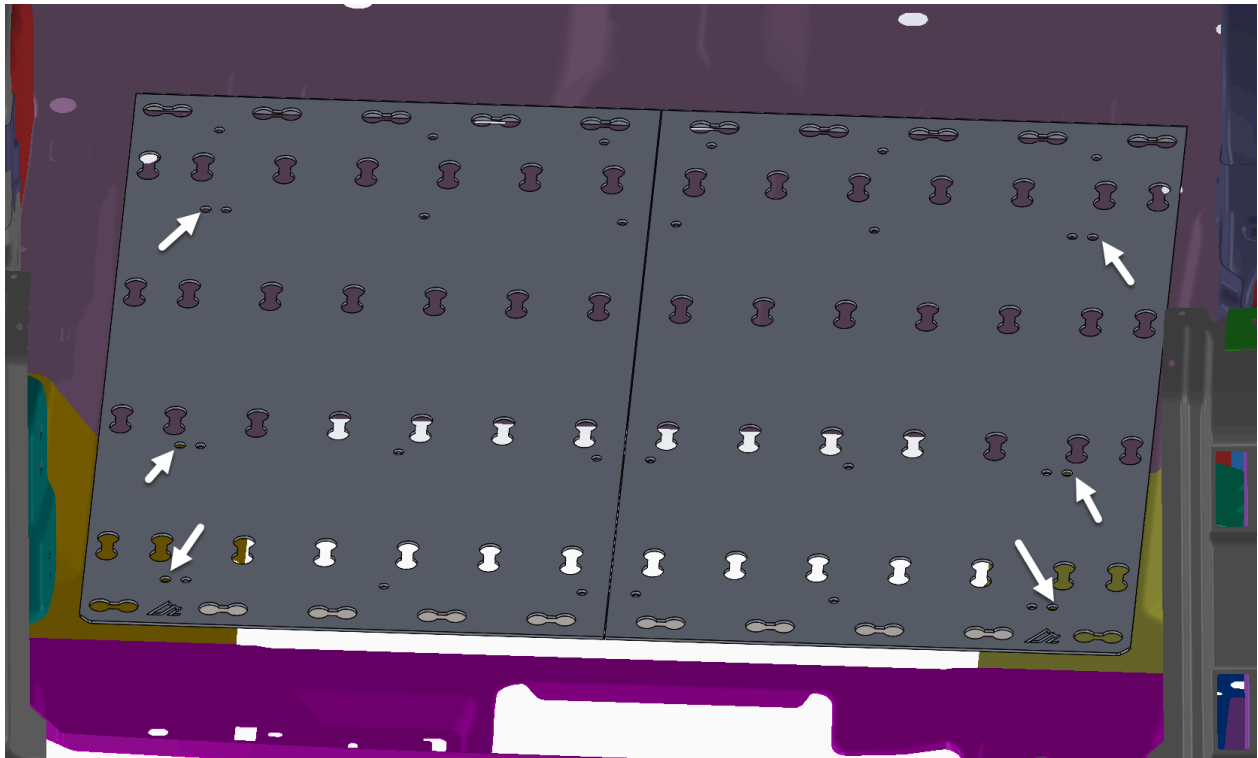
Note: We suggest using medium strength threadlocker to install all of these bolts.

Install all 18 of the bolts through the platforms and into the support rails (see bolt locations below). Keep each bolt loose until all bolts are installed. Then, fully tighten them all using the 4mm allen wrench.



Step 7 - Tighten Long 8mm Support Rail Bolts

Insert your 5mm allen wrench through the holes near the edges of the platform (identified by the white arrows below) to fully tighten the support rail bolts.



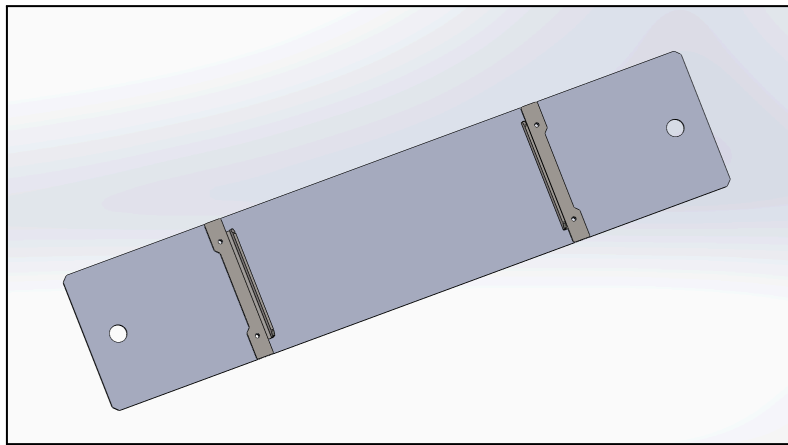
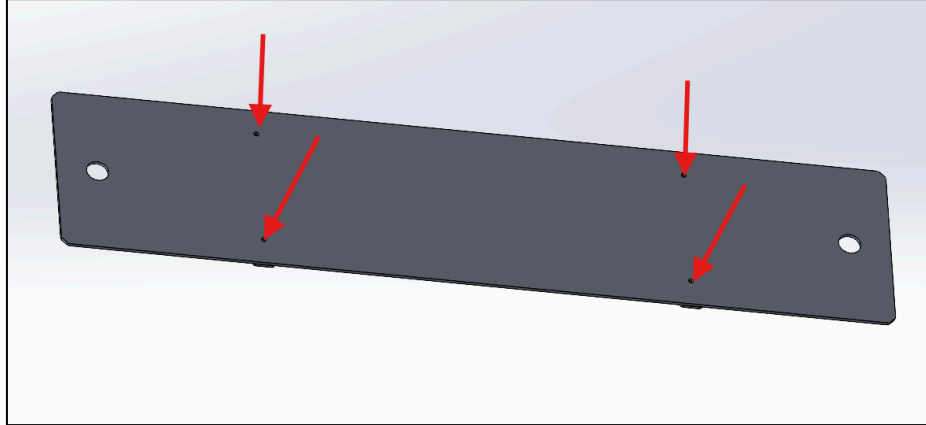
Step 8 - Share Your Photos

Please share photos of your final installation and how you are using the M.A.S.S. platform. We can't wait to see all of the creative ways people are going to use this product.

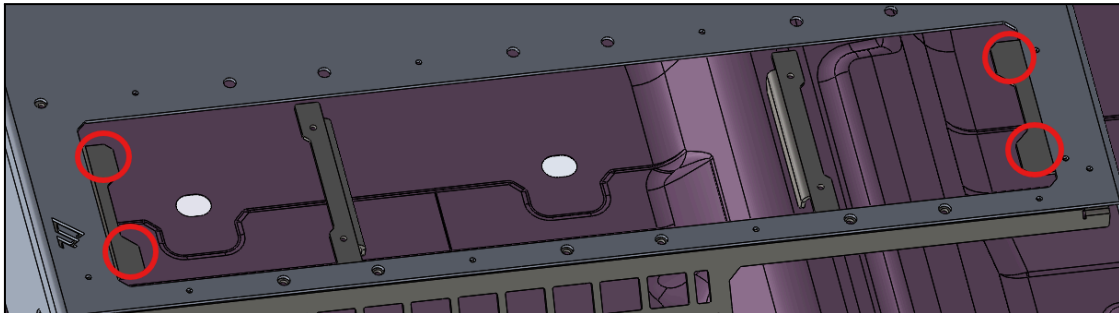


Step 9 - Access Doors for 4xE MASS Plus Ver

Install the Passenger Access Door Braces using 4 Flat Head - M6x8 mm Bolts (No Nuts Required)



Once done, place each of 4 3/4" - Round Magnets on the four spots shown below and simply set in its slot in the Passenger Plate



Thank you!

Thank you again for your purchase. At American Adventure Lab, we strive to improve anywhere we can. If you experience any issues with this product or these instructions, please let us know.

If you have any questions or concerns, please don't hesitate to reach out to us at 385.202.4188 or via email at Sales@AmericanAdventureLab.com.

